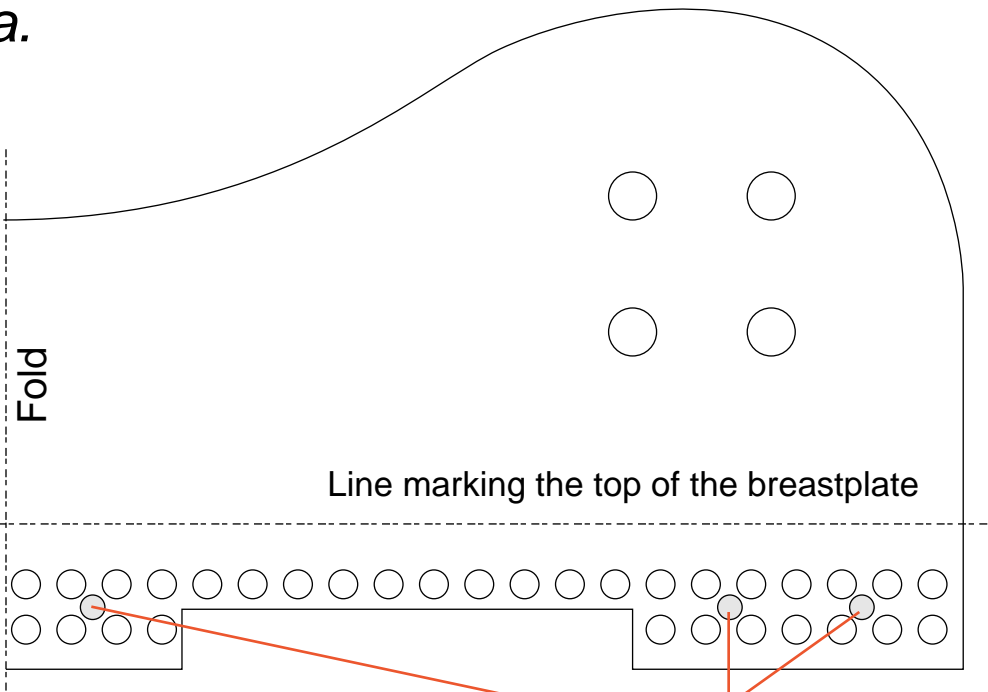


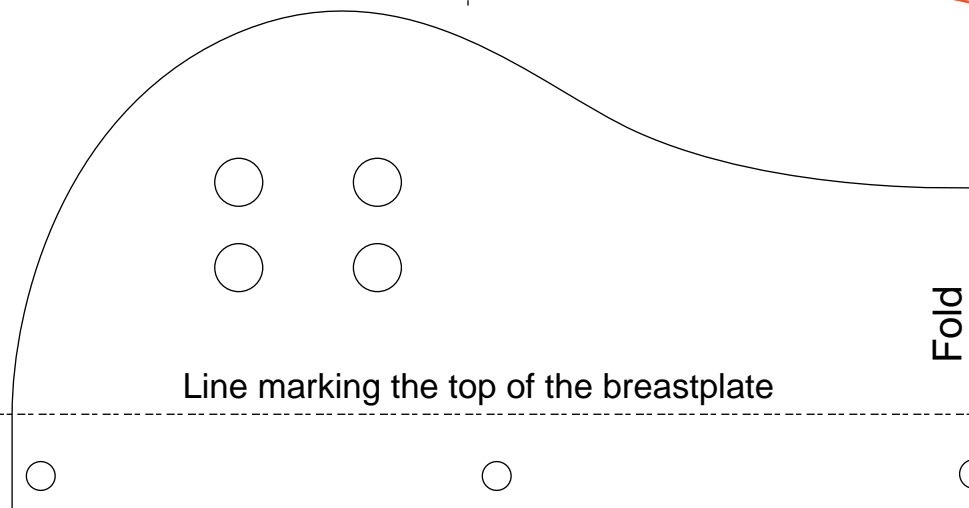
Patterns for *Munaita*. (Actual size)

Any of these patterns is acceptable; there are actually dozens of various styles you can choose from.



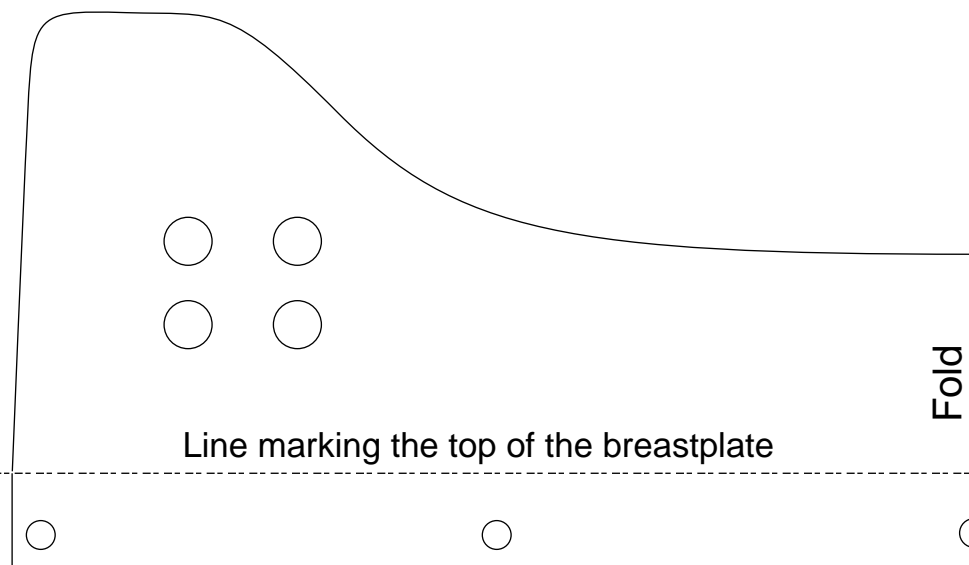
This is the "lower" pattern for a *munaita* attached to a scale dô.

Holes for hassô byô.



The *munaita* may have just the *takahimo* coming out of it, or it may have a second pair of holes for bringing the *takahimo* cords over the *munaita*. See the photos in the Manual to see what this looks like.

The actual width of the *munaita* depends on the width of the breast boards.



This is the "lower" pattern for a *munaita* attached to a solid dô.