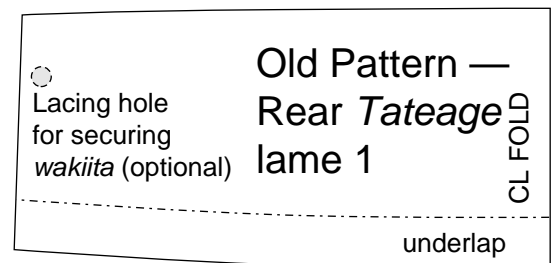
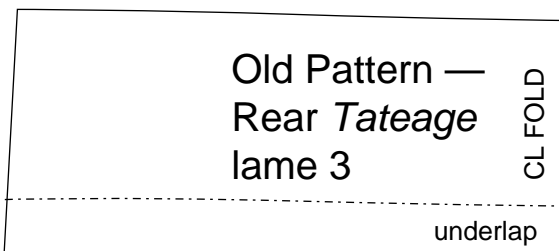
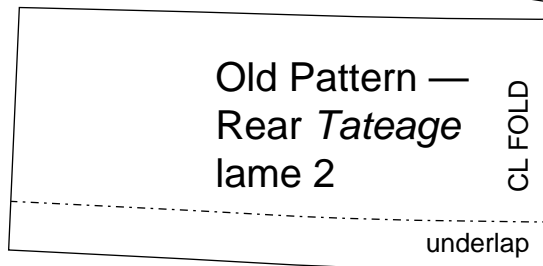
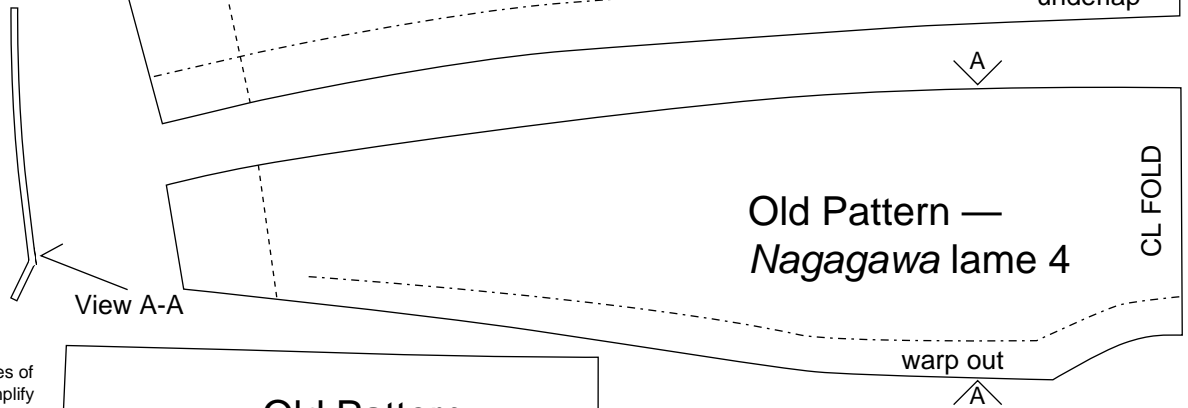
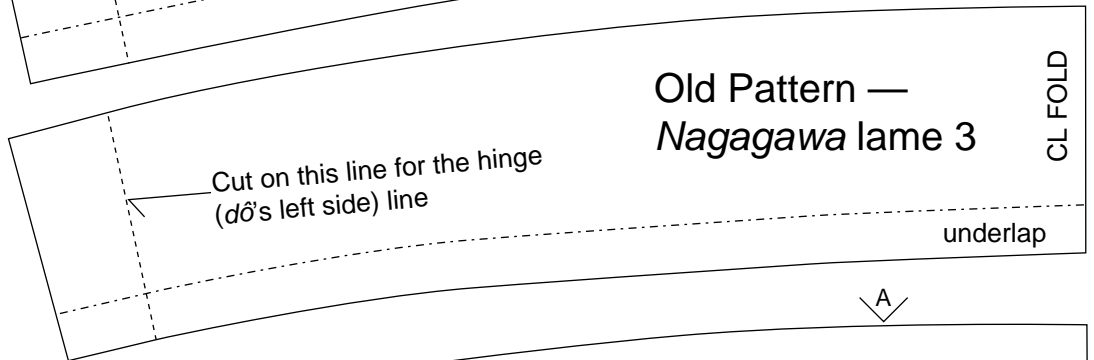
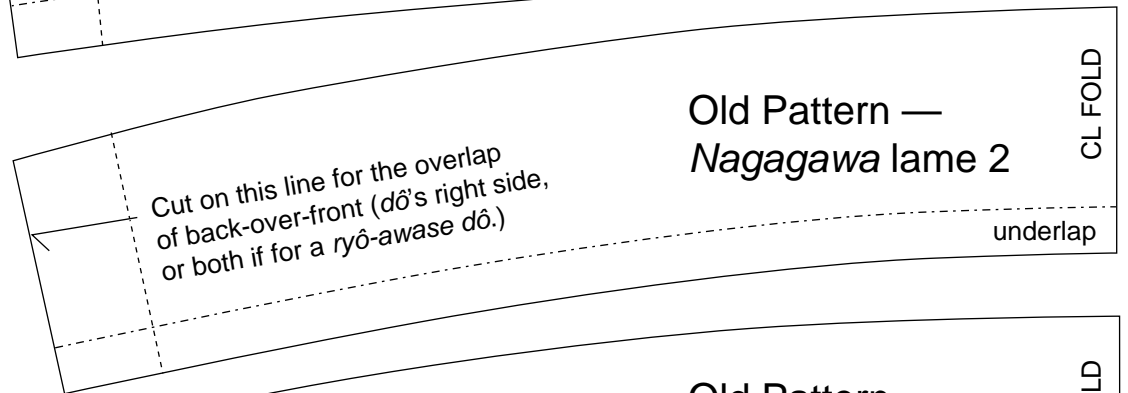
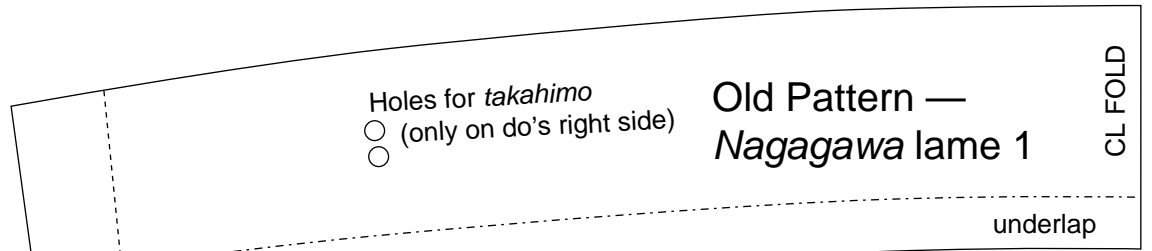


Pattern of back plates for an “old style” *Yokohagi dô*.*

(one-half actual size)

*For *okegawa dô*, *maru dô*, *môgami dô*, and other cuirasses constructed of horizontal lames.



The vertical dotted lines on the body panels mark the width of the left side as you wear the dô. The bit beyond the dotted line is the overlap on your right side.

To make a *môgami-dô*, connect the patterns for the lames for front and back plates at your left side; then mark down from the front and rear *tateage* for your hinge lines, and cut the patterns on those lines.

Although there are slight differences between the plates of the rear *tateage*, you can simplify your pattern by just cutting rectangles to the appropriate measurements. There is no appreciable difference.