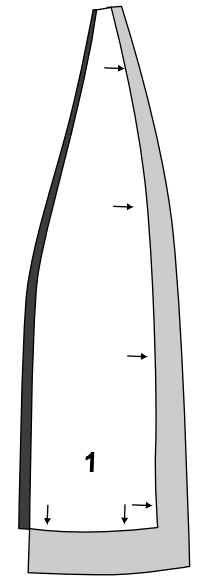
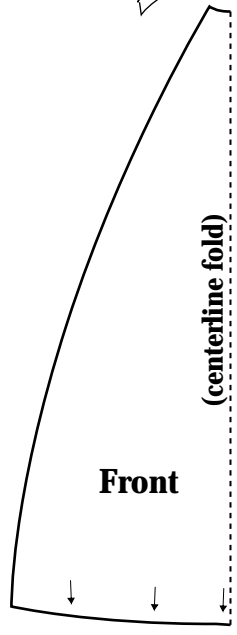
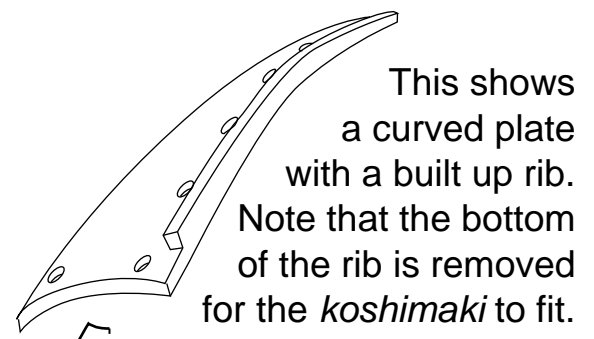
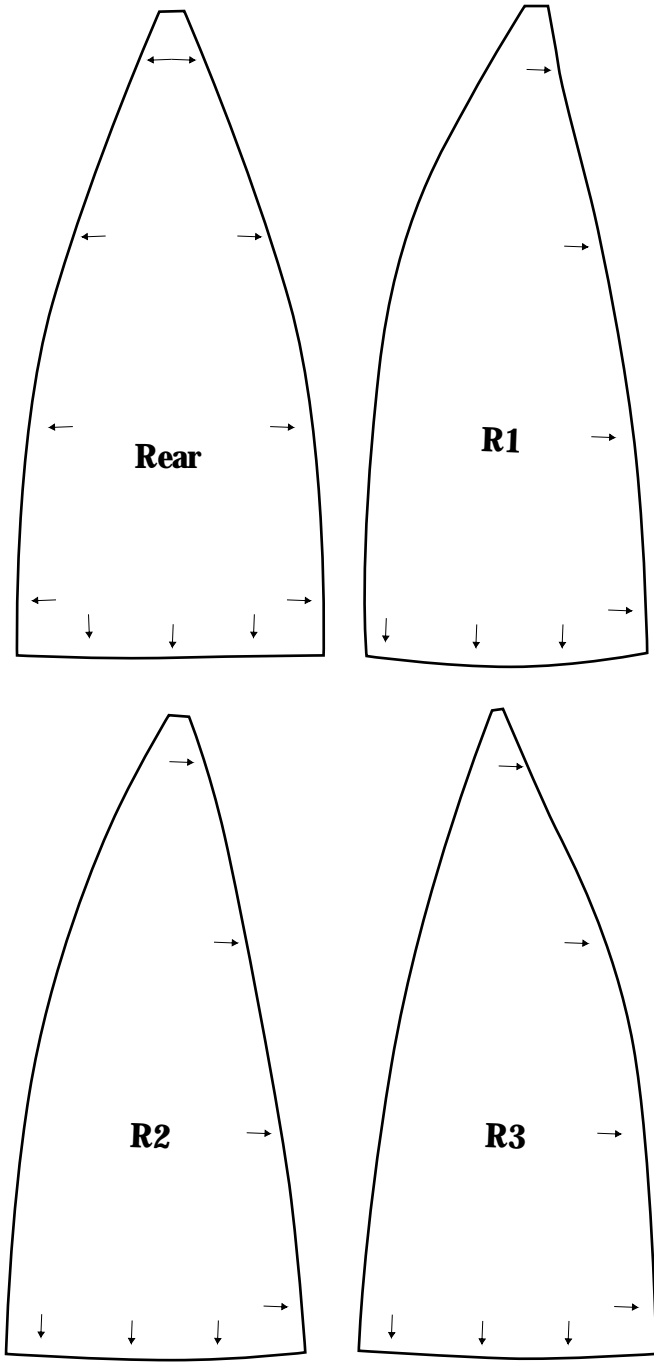


Pattern of plates for an 8-plate helmet bowl. (One-half actual size)

The arrows mark the sides that will need extra metal (c. 1/2") to underlap the next plate over and *koshimaki*.

If you are making a ribbed helmet bowl, the unmarked sides get the excess for ribs (c. 1/4")

Plates are numbered R (= Right side) from the back to the front.



Underlap Rib

The illustration at right shows how the pattern shown above (in white) is supplemented with material you have to add (in gray) depending on your intended project.